

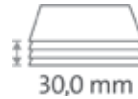
# Heavy-duty cutter 842



Commercial use:  
always ready for top performance.



Cutting length 430 mm



Cutting capacity 30.0 mm



Cutting capacity 300 sheets



Table size (overall dimensions) 720 x 590 mm



Carries the GS DGVU (German Statutory Accident Insurance Association) test mark



Extended 5-year warranty (except wearing parts)



German Engineering by Dahle

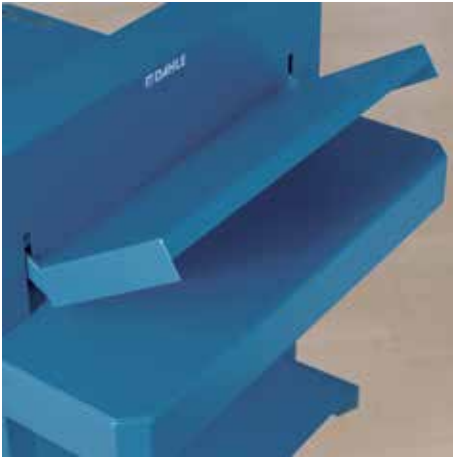
- High-quality guillotines for commercial use
- Solid metal table as a sturdy cutting base
- Sturdy handle for effortless cutting performance
- Screw-mounted, ground upper blade for cutting power
- High-quality, re-sharpenable blade made of Solingen steel
- Sturdy blade cover guard made of metal
- Convenient quick-action clamp
- Perfectly accurate scale bar with mm scale
- Adjustable metal backstop
- Easy-to-change cutting edge
- Minimum cut 35 mm
- Practical stand with storage shelf optionally available (712)

Article number: 00842-01090

EAN: 4007885008424

Product name	Cutting length in mm	DIN	Cutting capacity in mm	Cutting capacity A4 70 g/sm sheets	Table size, external dimensions, in mm	Off-cut side area, mm	Cutting side area, mm	Net weight in kg
842	430	A3	30	300	720 x 590	430 x 430	430 x 215	31,0

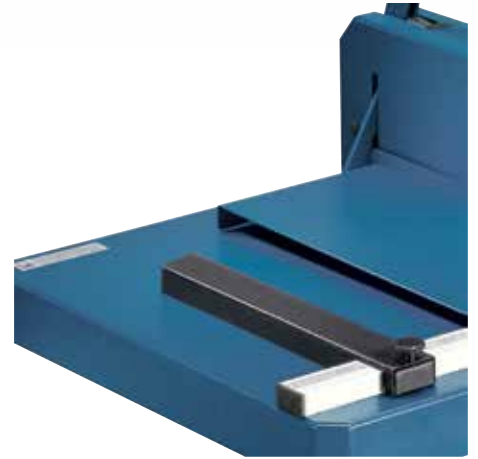
# Heavy-duty cutter 842



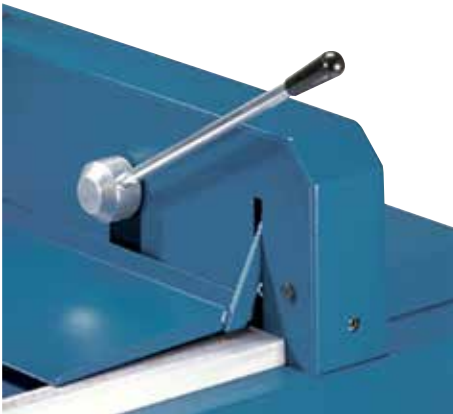
Sturdy blade cover guards in metal on heavy-duty cutter 842 cover the entire work area while cutting



Heavy-duty guillotine 842 also available as desk-top model



Adjustable metal backstop for quickly finding the right format



Convenient quick-action clamp for swift results